



HOLITOBLICH I

A CELEBRATION OF THE NORTH MISSISSIPPI HILLS

DESIGNED BY
 Jesse English
 Alex Gotherman
 Sinan Kordon
 Beau Lackey
 Meghan Schultz

FOR
 LA 4522 Graduate Design Studio II
 Spring 2011
 Wayne Wilkerson, Instructor
 Department of Landscape Architecture
 Mississippi State University



NATIONAL CONTEXT



STATE REGIONAL CONTEXT



COUNTY REGIONAL CONTEXT

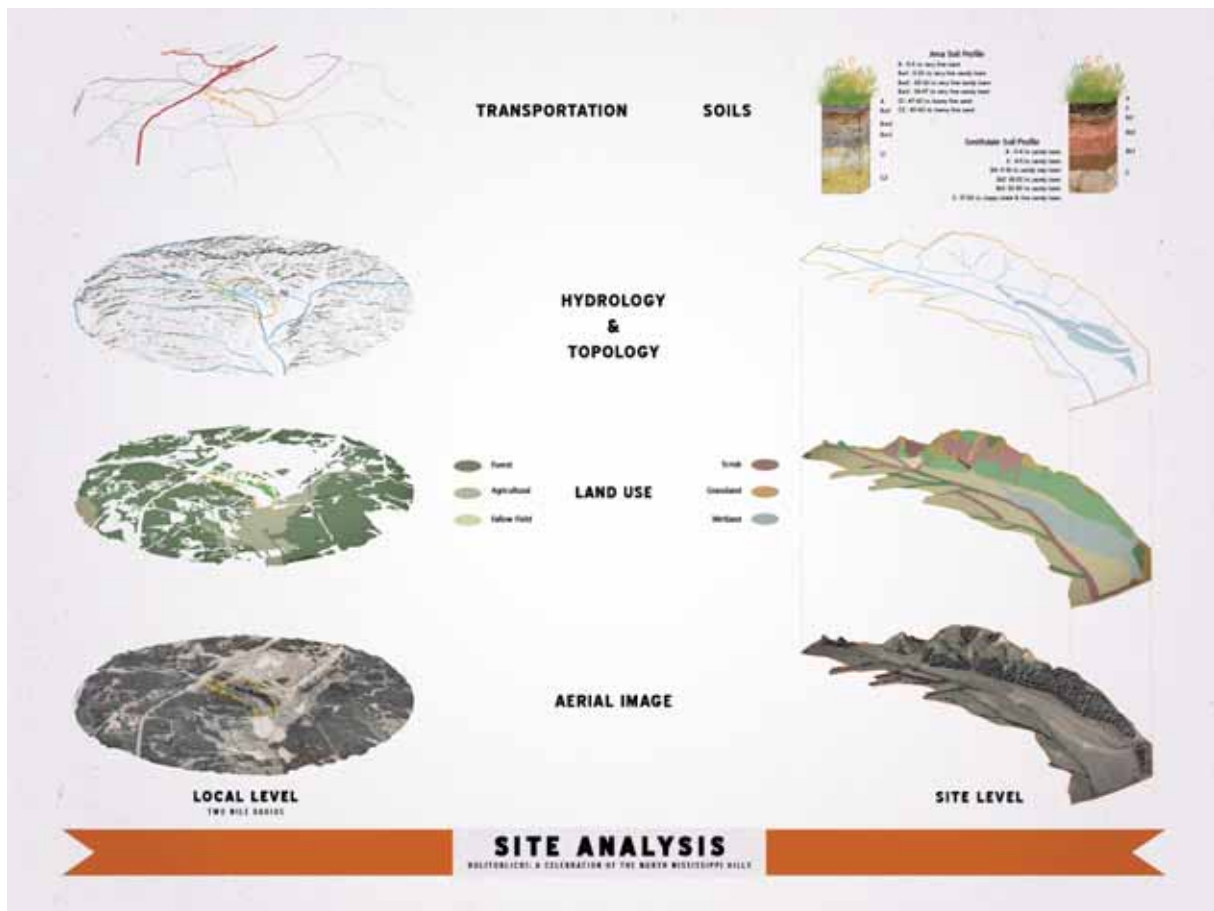


SITE CONTEXT



SITE CHARACTER

SITE CONTEXT
 HOLITOBLICH I: A CELEBRATION OF THE NORTH MISSISSIPPI HILLS



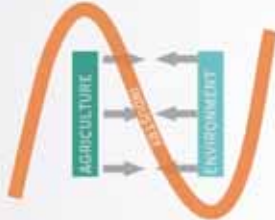
To celebrate the heritage and inspire the future of the north Mississippi Hills through the stewardship of its unique cultural and natural environment.

CONCEPT STATEMENT

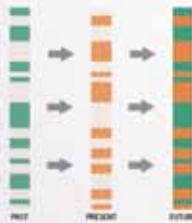
HOLYFORD: A CELEBRATION OF THE NORTH MISSISSIPPI HILLS



To express the three components of sustainable development (environment, economy, society) in every aspect of the design.



To weave together agricultural, environmental, and industrial factors and showcase the symbiotic relationships between them.

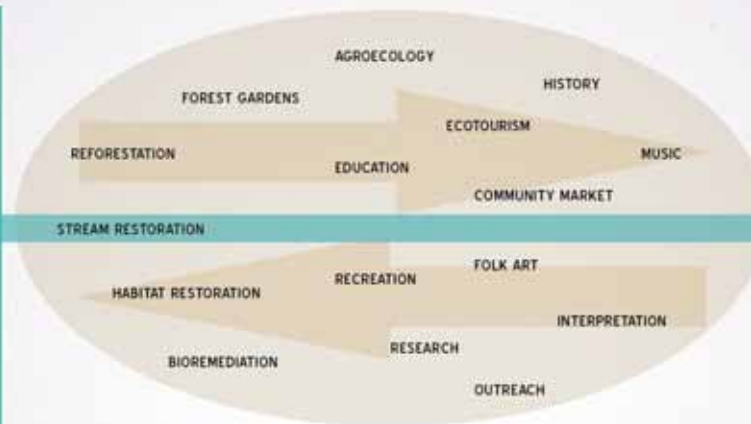


To evoke a sense of "the new old," pulling culture from the past and the present into an innovative and resilient future.

GUIDING PRINCIPLES

HOLITOBILICHI: A CELEBRATION OF THE NORTH MISSISSIPPI HILLS

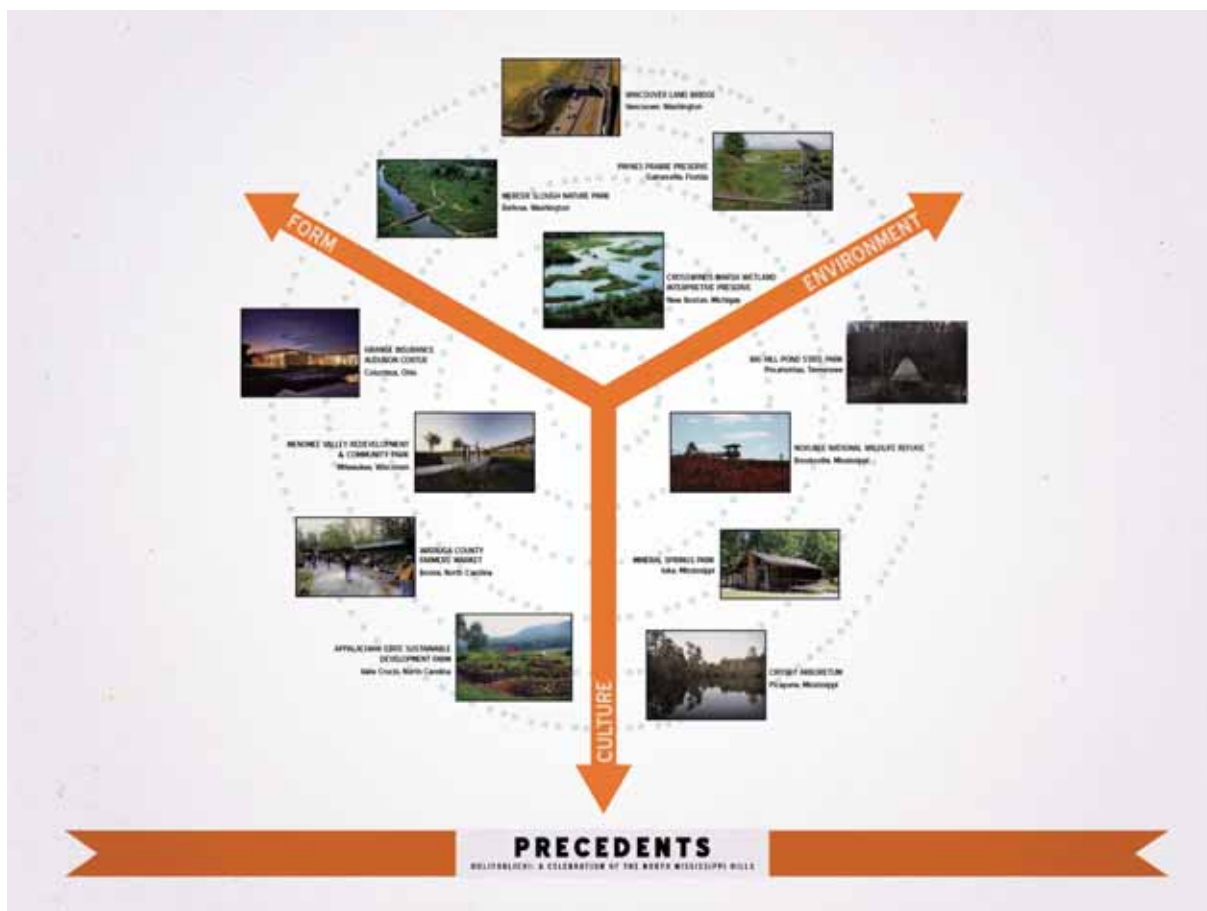
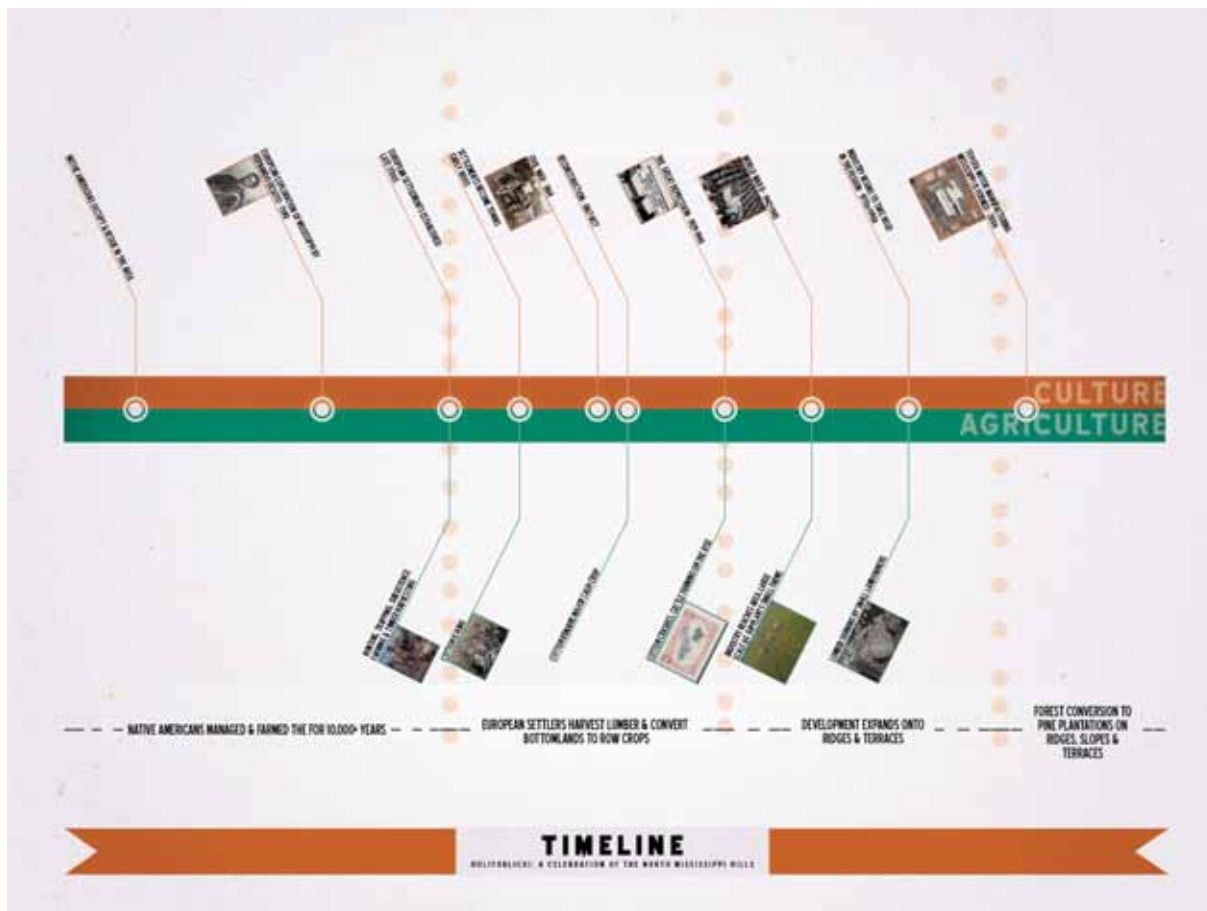
ENVIRONMENT

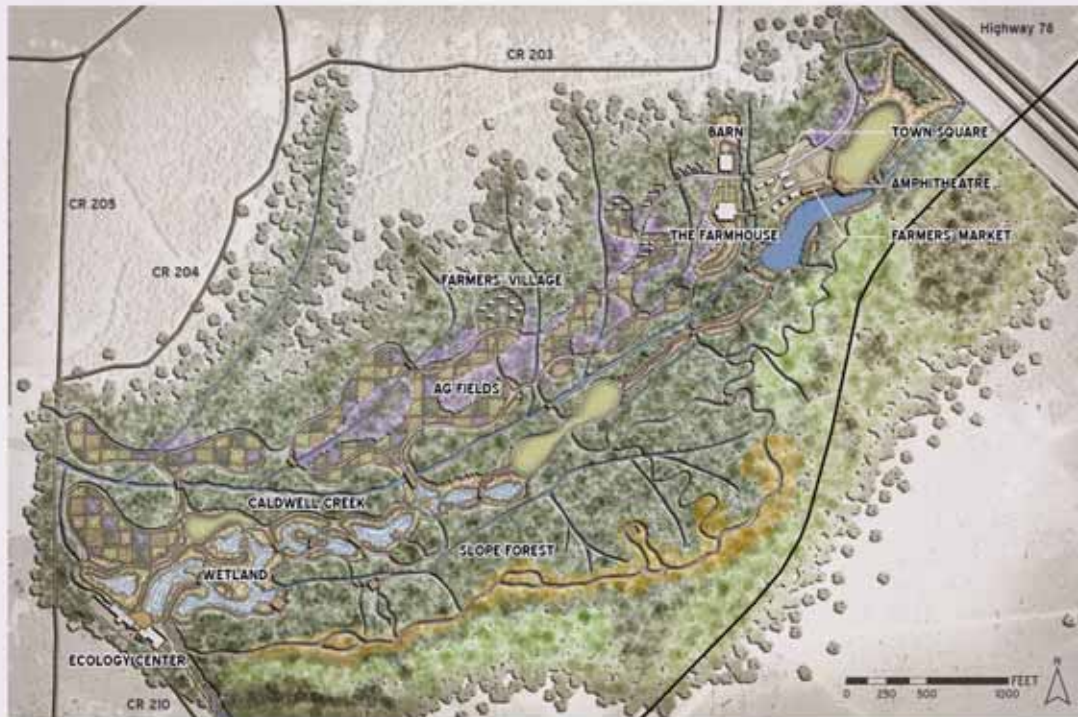


The design is anchored by two poles: environment and culture. Throughout the space between, the interconnections between the two poles are explored. From practicing agriculture in collaboration with nature to experiencing the blues in the environment that set its tone, Holitoblichi is an example of how the relationship between man and nature can be symbiotic.

DESIGN PHILOSOPHY

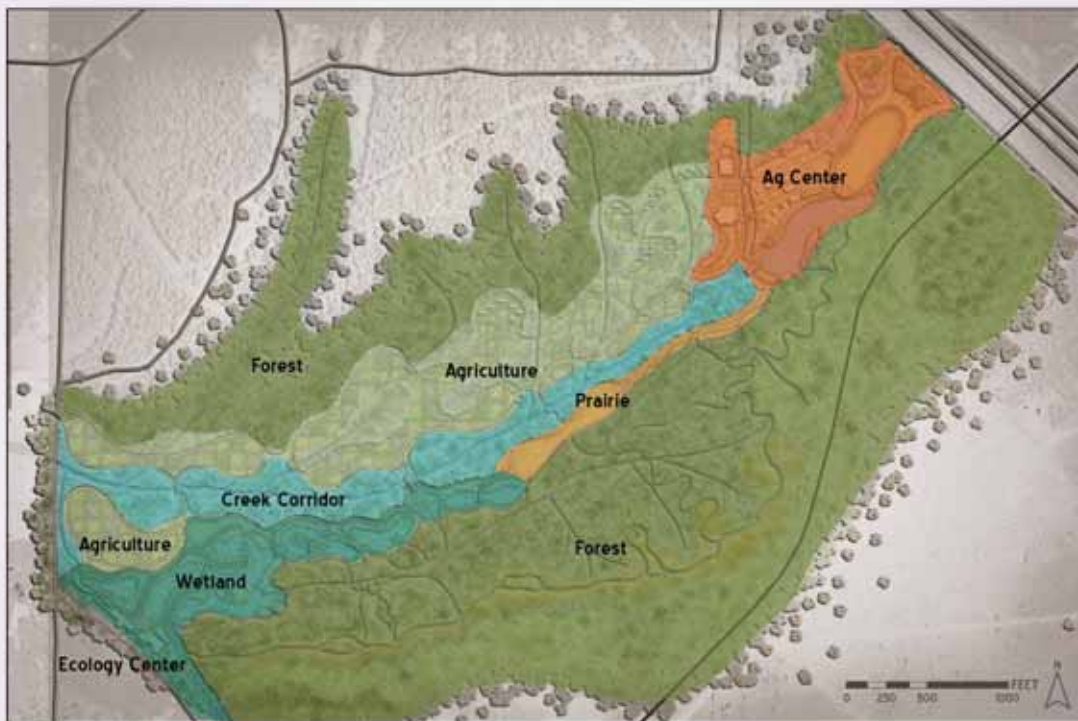
HOLITOBILICHI: A CELEBRATION OF THE NORTH MISSISSIPPI HILLS





MASTER PLAN

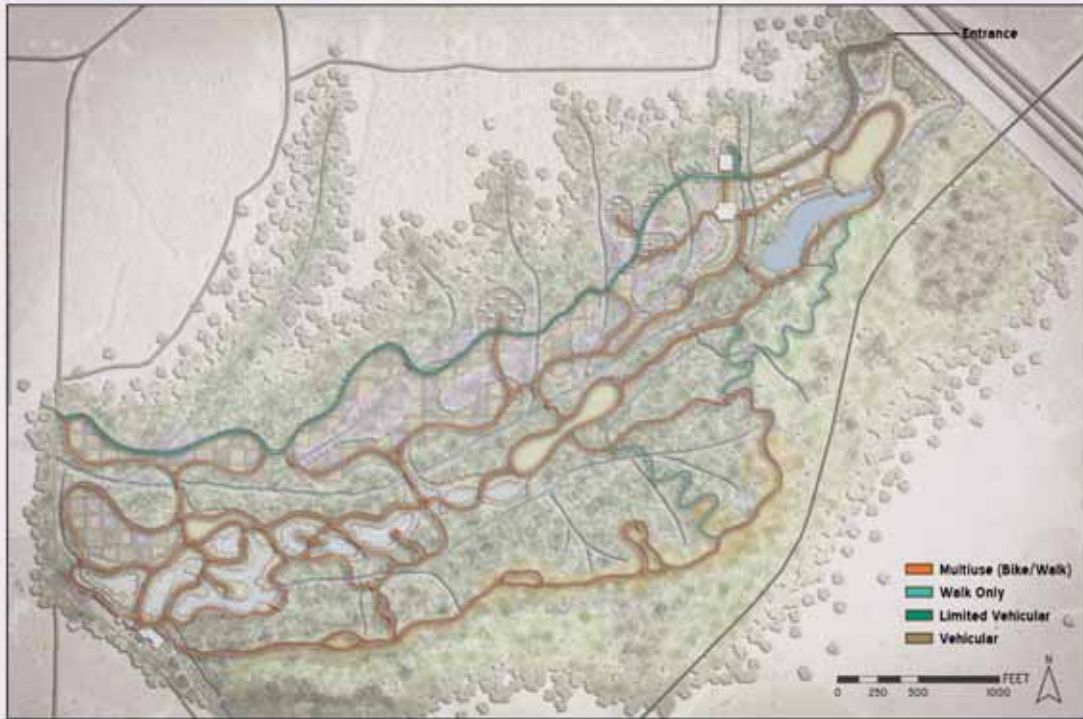
WILDFLORE: A CELEBRATION OF THE NORTH MISSISSIPPI HILLS



The site is divided into zones by focus and ecosystem type. Each contains interpretive elements that educate visitors about the culture and ecology of north Mississippi and the interactions between the two.

ZONES

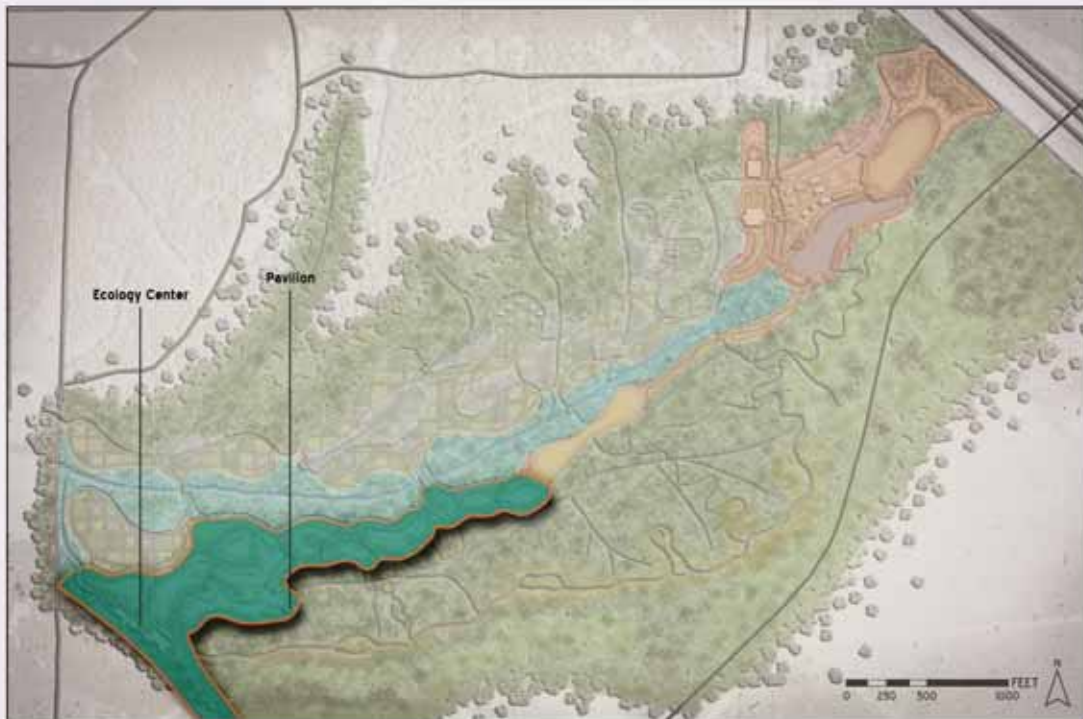
WILDFLORE: A CELEBRATION OF THE NORTH MISSISSIPPI HILLS



An extensive greenway system threads its way through the entire site, encouraging visitors to explore the site on bike or on foot. Several hiking trails are also available for anyone wanting to explore more strenuous terrain. The main entrance is located on the eastern end of the park, and allows direct access to the ag center and amphitheatre. A limited-access service road along the northern edge of the park allows farmers, researchers and other guests access to lodging and agricultural areas.

CIRCULATION

BULLDOZER: A CELEBRATION OF THE NORTH MISSISSIPPI HILLS



The wetland zone contains the ecology center and a constructed wetland. The ecology center would house interpretive displays about the site and the region, while also hosting space for conferences, school trips, and research. The wetland itself would remediate stormwater from the manufacturing plant next door and provide habitat for ducks, fish, and other aquatic flora and fauna. The pavilion offers a quiet space to observe the wetland, while also providing a venue for classes, demonstrations, and performances.

WETLAND

BULLDOZER: A CELEBRATION OF THE NORTH MISSISSIPPI HILLS



Perspective looking southwest



Plan View

Designed to place visitors within the ecosystems of north Mississippi, the ecology center serves as the introduction to the ecological systems at work in the site and surrounding region. Nestled into a hill, the center offers many vantage points to observe the wetland and easy access to the park's greenway. Interpretive exhibits highlighting the site and surrounding region will be found throughout the center. It will also have rooms for conferences and meetings, as well as dedicated research space and a bookstore and library.



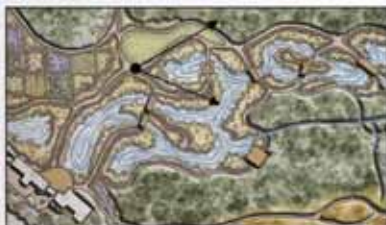
3D View

ECOLOGY CENTER

RECYCLED: A CELEBRATION OF THE NORTH MISSISSIPPI HILLS



Perspective looking east



Plan View

Made possible by the influx of stormwater from the adjacent industrial plant, the wetland is constructed to manage and filter stormwater while providing habitat for aquatic flora and fauna. An extensive boardwalk network complete with interpretive signage crisscrosses the wetland, providing ample opportunity to observe and learn. Research plots will be available for researchers and school groups, while regional folk art and sculpture will be featured throughout.



3D View

WETLAND

RECYCLED: A CELEBRATION OF THE NORTH MISSISSIPPI HILLS

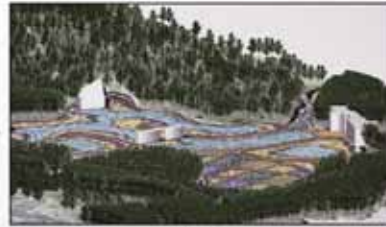


Perspective looking southeast



Plan View

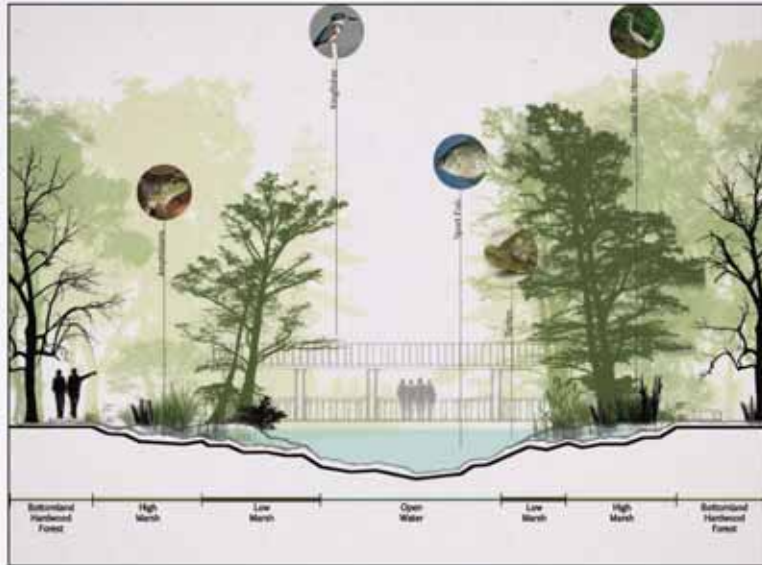
The pavilion is positioned in a secluded corner of the wetland, providing an ideal spot to quietly contemplate the sights and sounds or enjoy a meal. This structure may also be used for classes, demonstrations, speakers, or performances. Designed to blend into its surroundings, it is inspired by the many rustic farming sheds present across north Mississippi.



3D View

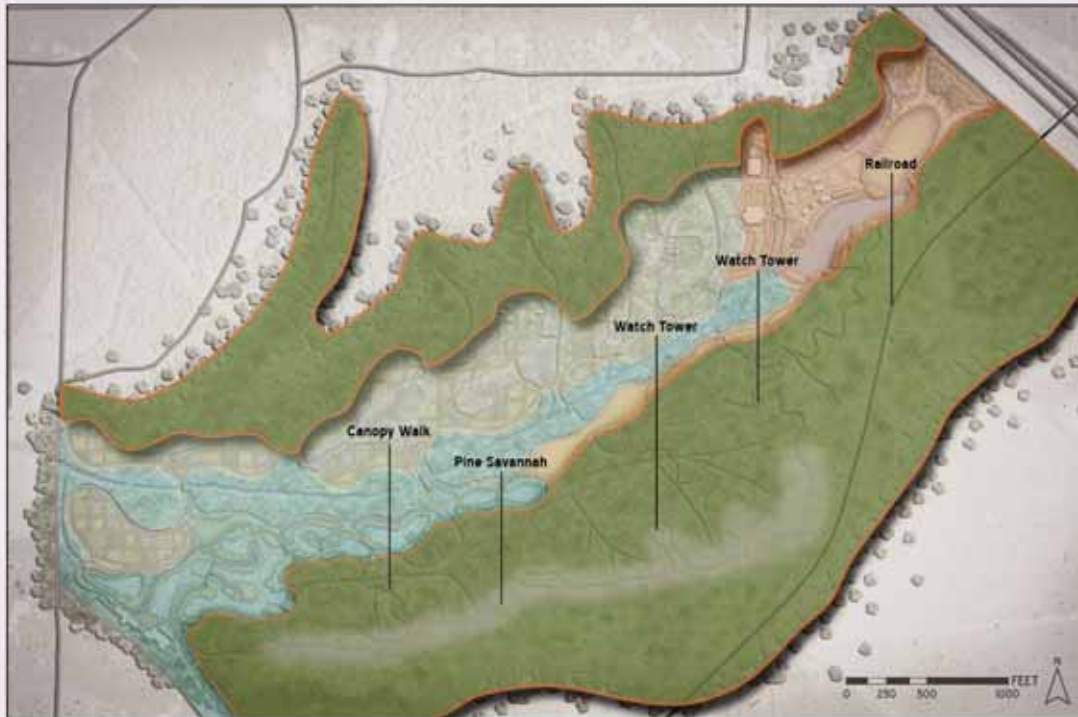
PAVILION

WILDFLOWERS: A CELEBRATION OF THE NORTH MISSISSIPPI HILLS



WETLAND

WILDFLOWERS: A CELEBRATION OF THE NORTH MISSISSIPPI HILLS



The site is buffered on the north and south by largely intact forested areas. The North Forest is predominately planted pines, while the South Forest, which is much steeper in slope, harbors a varied collection of beeches, oaks, hickories, and other hardwoods, with the remnants of a pine savannah on the ridge. An old county road running along the ridge would be used as a greenway, and several stops along its path allow visitors to experience the site from high above in watch towers placed at key viewsheds along the ridge.

FOREST

BULLFROG: A CELEBRATION OF THE NORTH MISSISSIPPI HILLS



Due to past agricultural use and the recent construction of an industrial plant next door, little existing forest is present on site. The large existing forest to the north is mostly planted pines, while the existing forest to the south boasts a nice collection of beeches and other large hardwoods. In the design, large amounts of reforestation are proposed, reflecting many plant communities native to north Mississippi.

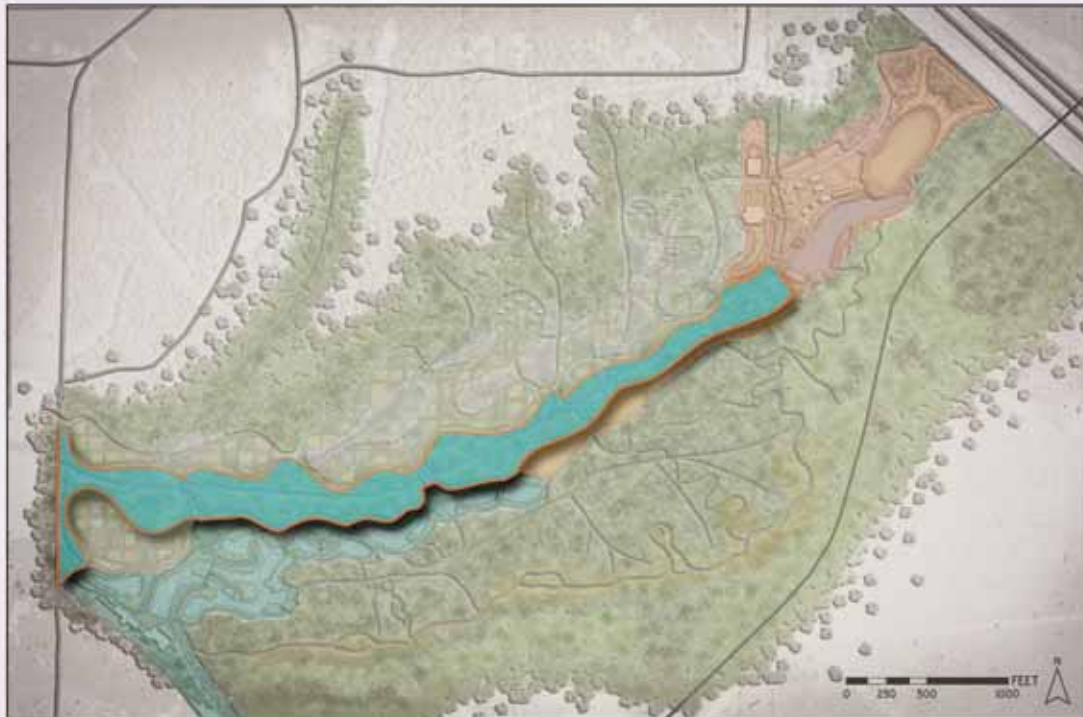
REFORESTATION

BULLFROG: A CELEBRATION OF THE NORTH MISSISSIPPI HILLS



SLOPE FOREST

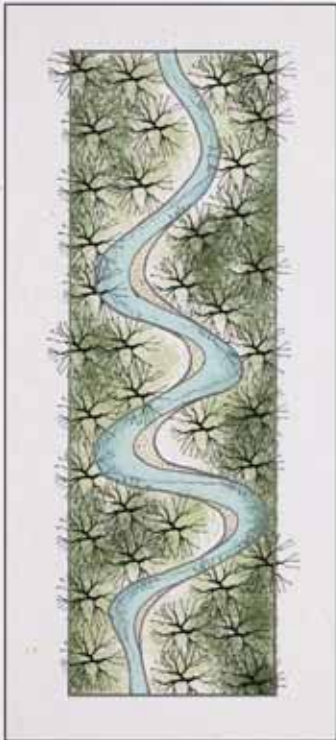
MULTIPLYBUILT: A CELEBRATION OF THE NORTH MISSISSIPPI HILLS



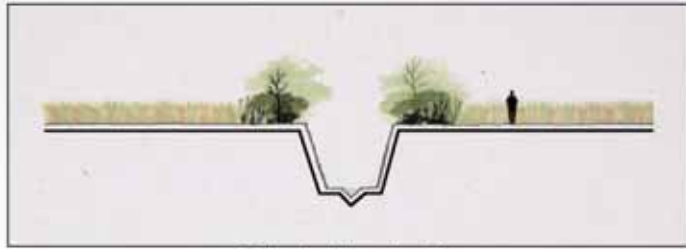
Caldwell Creek is the spine of the site, running from east to west directly through the center. Badly eroded and channelized over years of mismanagement, this corridor will be restored to a functioning riparian habitat. The channel will be widened, allowing the creek to naturally meander and support native riparian plant communities. It will also be buffered along its entire length, minimizing runoff impacts and filtering water. These restorations will allow the creek to more successfully handle the increased load of stormwater introduced from the nearby industrial plant.

CREEK CORRIDOR

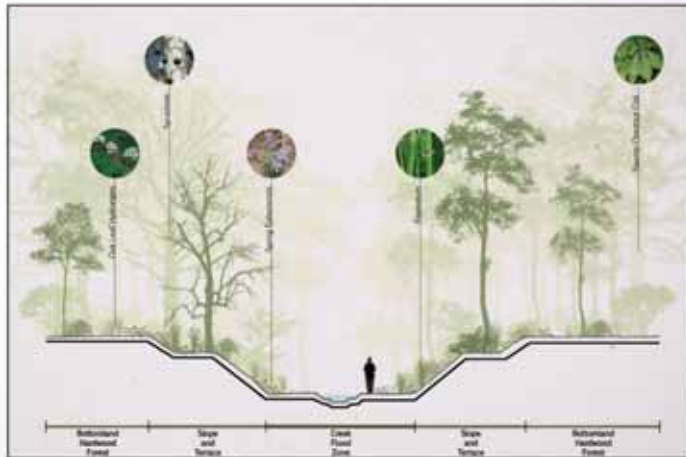
MULTIPLYBUILT: A CELEBRATION OF THE NORTH MISSISSIPPI HILLS



Plan view of proposed creek restoration



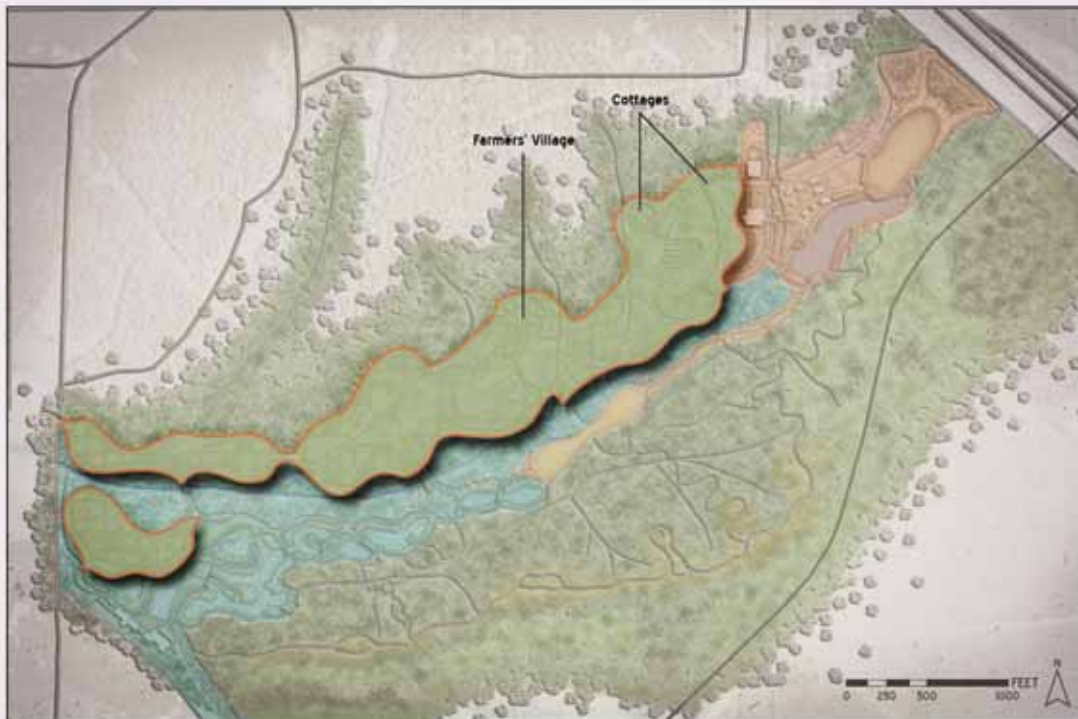
Section of existing creek corridor



Section of restored creek corridor

CREEK CORRIDOR

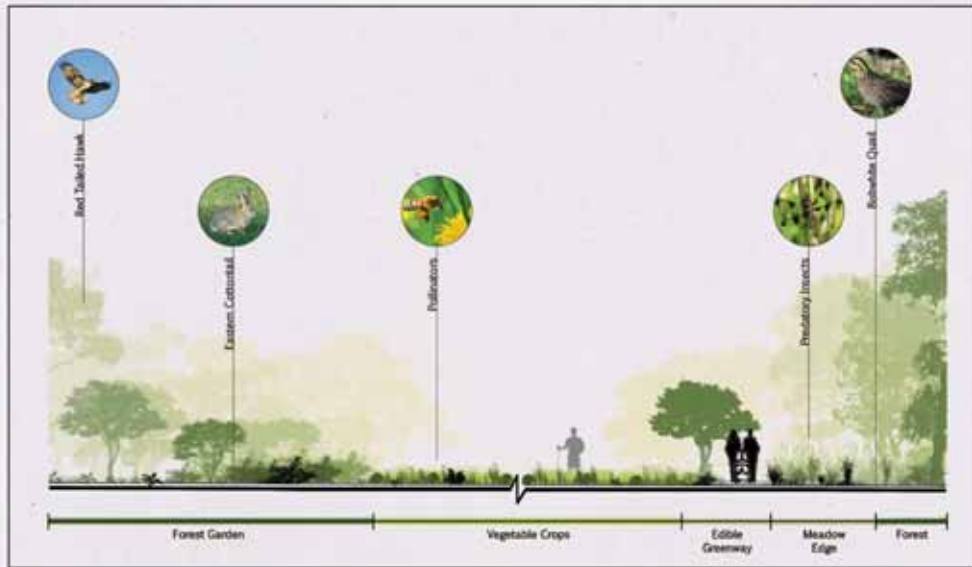
WOLFFBRECHT | A CELEBRATION OF THE NORTH MISSISSIPPI HILLS



The agricultural fields are where the ecology and culture of the site manifest themselves in the truest integrated fashion. Focusing on agroecology, these fields will produce food in a manner that maximizes production while minimizing environmental impacts. Intensive organic agriculture, combined with the ancient and reviving practice of forest gardens, will not only produce food for the site and the farmers' market, but educate visitors on methods of food production that can feed the world without destroying it.

AGRICULTURE

WOLFFBRECHT | A CELEBRATION OF THE NORTH MISSISSIPPI HILLS



AGRICULTURE

HOLLIBROOK: A CELEBRATION OF THE NORTH MISSISSIPPI HILLS



Perspective looking northeast



Plan View

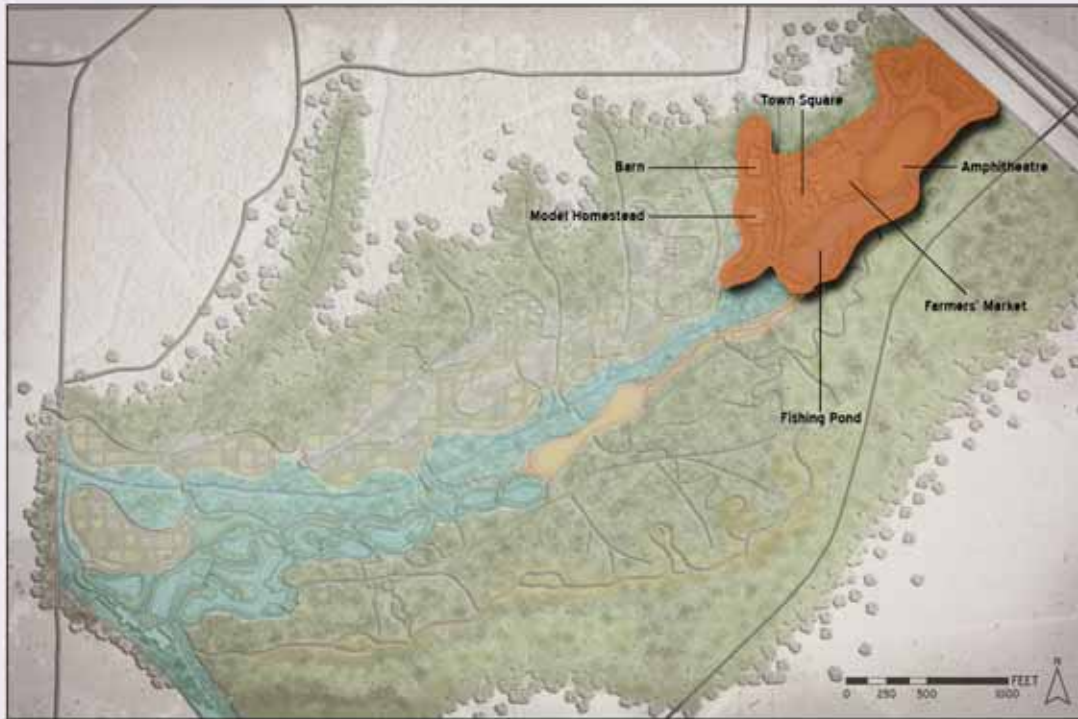
The farmers' village will provide a community setting for the farmers that maintain the fields and the researchers that study the site. It will also provide housing for interns and students taking intensive, immersive classes provided on site.



3D View

FARMERS' VILLAGE

HOLLIBROOK: A CELEBRATION OF THE NORTH MISSISSIPPI HILLS



The ag center is the cultural anchor of the site, with structures built to serve that purpose. A farmers' market, amphitheatre, nursery, art & craft gallery, and fishing pond, are all contained within. Of special importance are the university Extension offices, which would serve the public by hosting classes and demonstrations, as well as maintaining demonstration gardens throughout the center. A model homestead will also be built, housing a bed & breakfast operation and demonstrating how to grow enough food to provide for a family in its surrounding gardens.

AG CENTER

WALDFORCHER: A CELEBRATION OF THE NORTH MISSISSIPPI HILLS



Perspective looking southwest



Plan View

The Farmhouse will serve as a demonstration homestead, showing visitors how to feed a household with food sourced as locally as possible - from their own yard. It will also house an operating bed & breakfast, tapping into the burgeoning ecotourism market. All of the food prepared in the Farmhouse will be grown on site, serving as an example of how farmers and others with interest in the hospitality industry can operate their business. It will also serve as the 'nerve center' for other cottages distributed throughout the site that would be available for visitors, researchers, or executive retreats.



3D View

FARMHOUSE

WALDFORCHER: A CELEBRATION OF THE NORTH MISSISSIPPI HILLS



Perspective looking west



Plan View

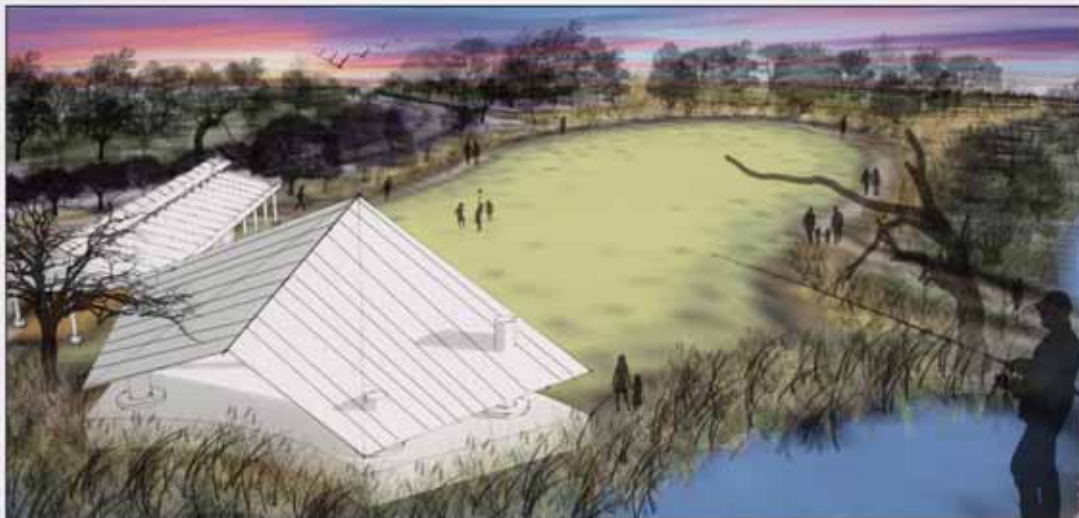
The town square is the heart of the ag center. Surrounded by buildings inspired by vernacular architecture, this area will house Extension offices, art & craft galleries, a nursery, demonstration gardens, community kitchens, and meeting space for groups. Designed to reflect a small community common, it intersects a bit of urban influence into the site. With more and more people moving into urban areas, it allows the site to educate these visitors as well, with exhibits that focus on food production in urban settings.



3D View

TOWN SQUARE

HELEBRONIC: A CELEBRATION OF THE NORTH MISSISSIPPI HILLS



Perspective looking northeast



Plan View

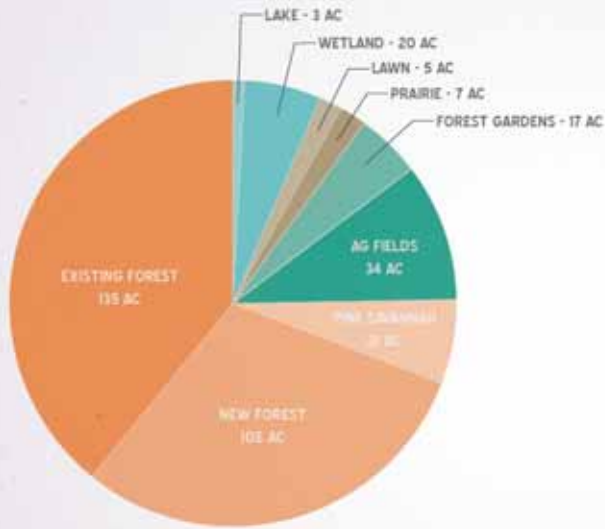
Being the birthplace of the blues, music is very important to Mississippi culture. The amphitheatre, located adjacent to the farmers' market, provides a large venue for music festivals and other types of performance. When not hosting concerts, the amphitheatre provides a large open space for visitors to recreate, enjoy the outdoors. A fishing lake borders the southern edge of the amphitheatre, providing a chance to catch some fish and observe wildlife.



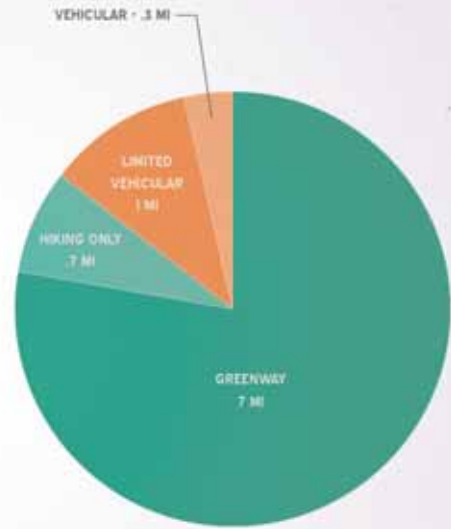
3D View

AMPHITHEATRE

HELEBRONIC: A CELEBRATION OF THE NORTH MISSISSIPPI HILLS



LAND USE



PATHWAYS

SUMMARY

MULTICULTURAL: A CELEBRATION OF THE NORTH MISSISSIPPI HILLS